



*Central Robotics and Artificial Intelligence (C-RAI)  
Removing the risk from our extreme environments*

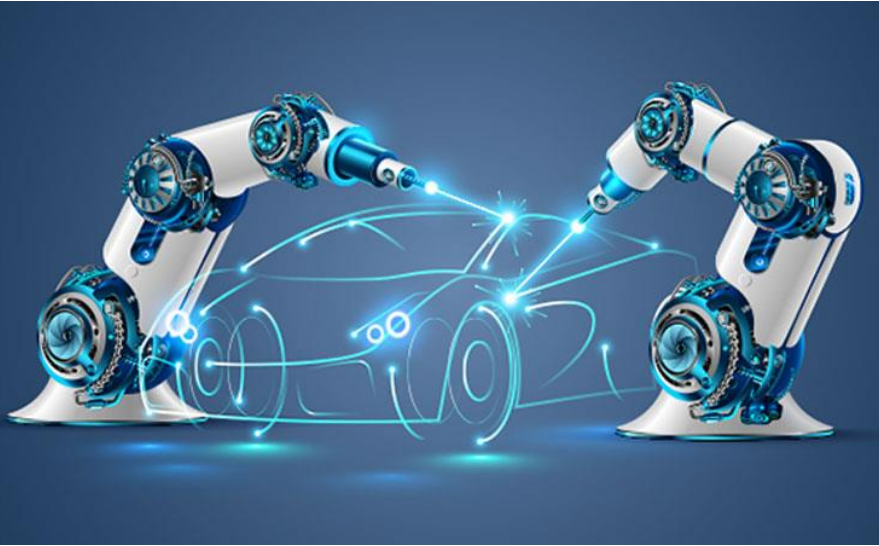
# Robotics and Artificial Intelligence at Sellafield Ltd

Removing the risk from our extreme environments

12 April 2023

*Central Robotics and Artificial Intelligence (C-RAI)  
Removing the risk from our extreme environments*

# Why Robotics?

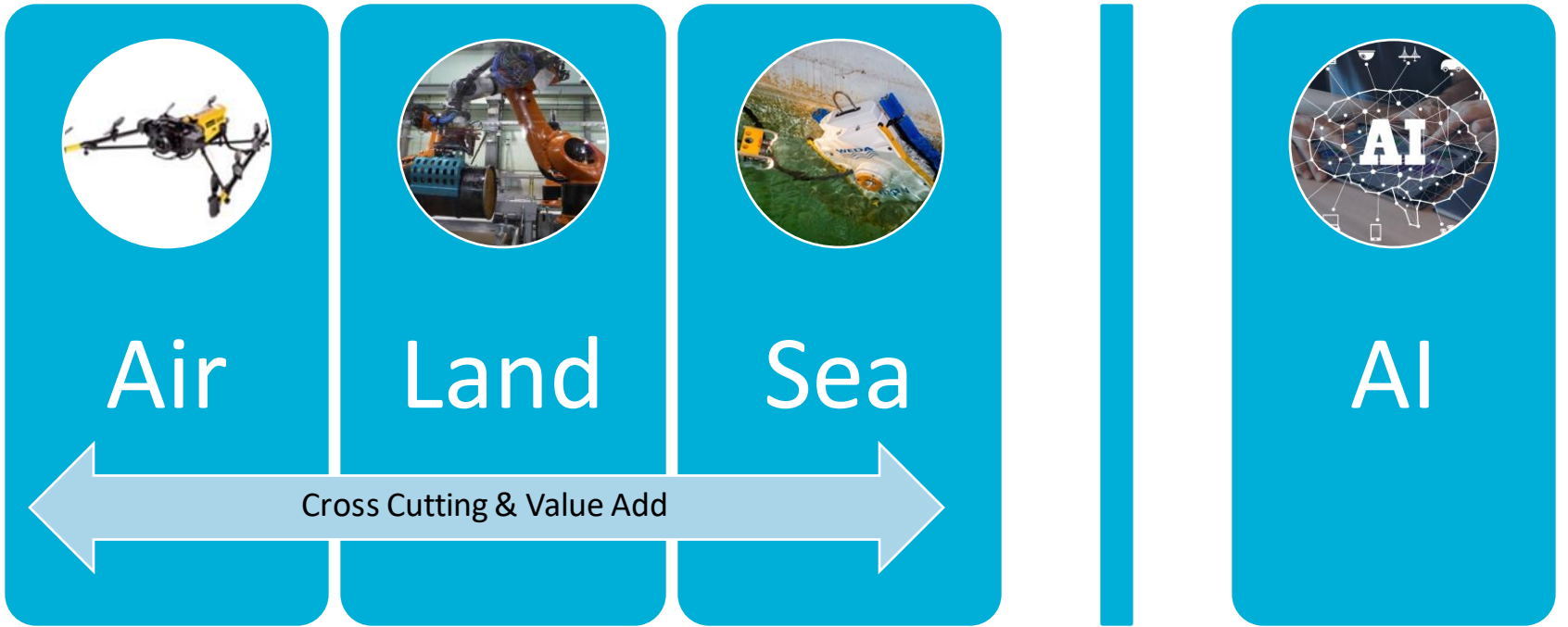


- Robotics are used as BAU in other industries
- Bespoke Nuclear challenges requiring bespoke solutions.
- Interface between the extreme environment and the workforce.

## Benefits:

- Creating that interface between the extreme environment and the operator
- Accelerating our mission
- Upskilling and Training
- Overall reduction in costs,
- Socio-Economic return as a bi-product





- Control systems
- Standardised Platforms and systems
- Communications
- Vision systems
- Human-Machine Interface
- Data kits / stores
- Measurements
- Autonomous systems
- Regulatory Framework
- Safety case Approach
- Software
- V&V of solutions

- Standardised Platforms and systems
- Communications
- Vision systems
- Data kits / stores
- Regulatory Framework
- Safety case Approach
- Software
- V&V of solutions

Solution Inspiration  
Intelligence Creativity

Ideas

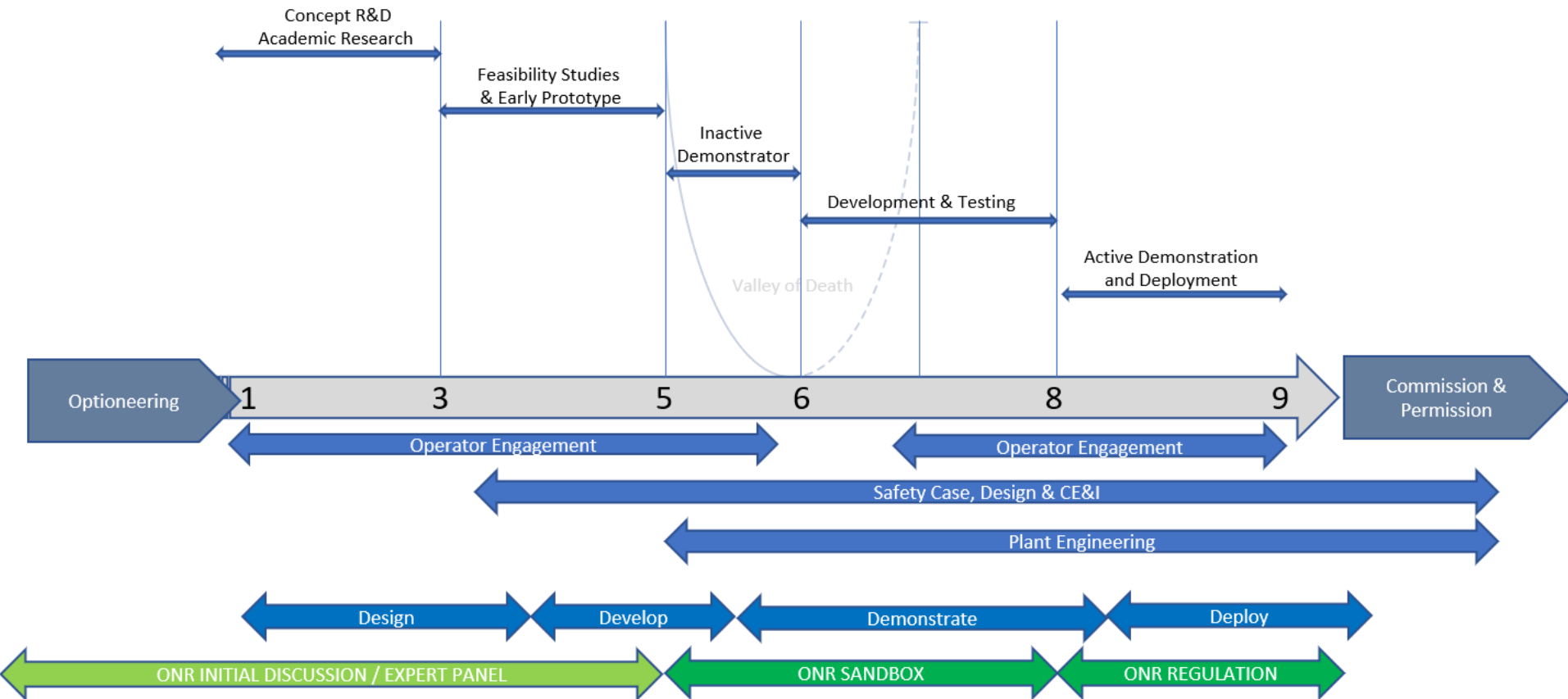
Vision



Innovation



# Seamless Transactional TRL



# THANKS

